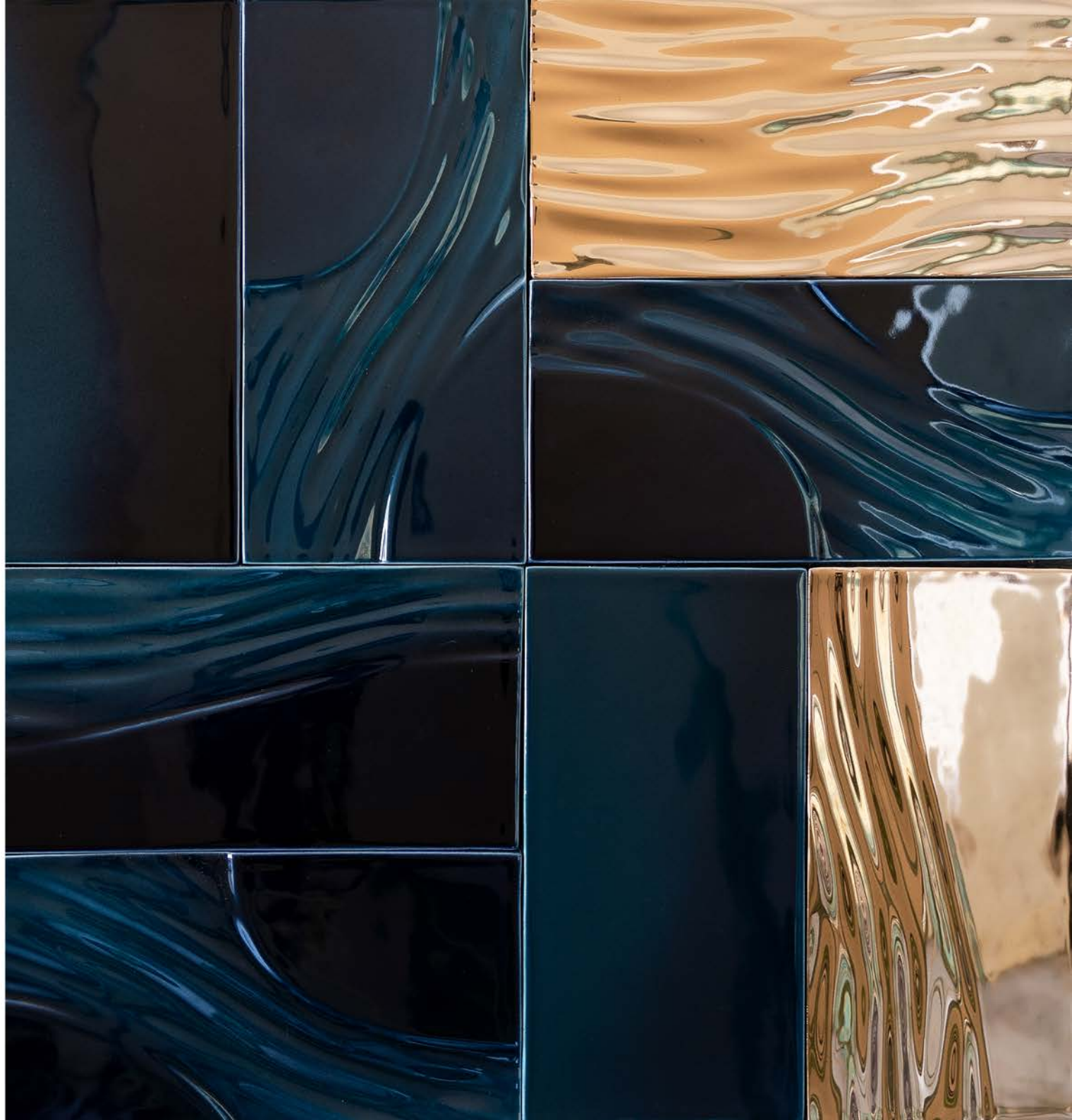


BOTTEGANOVE

BARENE
COLOR CHART



Mosaic | Tile Shade Variation Categories



V0

V0 - Very Uniform Appearance

Pieces of the same shade value are very uniform and smooth in texture, they can be measured for small color differences and are in compliance with color uniformity requirements.



V1

V1 - Uniform Appearance

Differences among pieces from the same production run are minimal.



V2

V2 - Slight Variation

Clearly distinguishable differences in color and/or texture within similar colors.



V3

V3 - Moderate Variation

While the colors and/or texture present on a single piece of tile will be indicative of the colors and/or texture to be expected on the other tiles, the amount of colors and/or texture on each piece may vary significantly. It is recommended that the range be viewed before selection.



V4

V4 - Substantial Variation

Random color and/or texture differ from tile to tile, so that one tile may have totally different colors and/or texture from that on other tiles. Thus, the final installation will be unique. It is recommended that the range be viewed before selection.

DS

Dark Brown Stoneware

A mid fired fine-grained clay body that has a chocolate dark color. Great mechanical strength with little water absorption, sourced from German quarries. It is rich in Manganese oxide that reacts with specific glazes and creates particular effects.

Destination of use:

Vertical indoors surfaces and shower.

Which collection used it?

Clinker, Diamantino, Petali used this clay body our standard proposal.

M

Stoneware "M"

A mid fired fine-grained clay body that has a grey/buff color, it's been formulated specifically for us from a local clay supplier. It matures in a strong, durable and vitreous ceramic in a mid fired range, enabling to save energetic cost. It doesn't have a great workability so not all shapes can be made with this body clay and not all the glazes can be used, but still represent a great less expensive option to the classic porcelain or stoneware porcelain body clay.

Destination of use:

Vertical indoors/outdoors surfaces, swimming pool, steam rooms shower and all kinds of severe conditions.

Which collection used it?

Plumage, Petali, Clinker, Diamantino, could use this clay body for specific destination of use like outdoor installation or other severe conditions of use.

P

Porcelain

A high-firing fine-grained white clay body that matures to a durable, strong, vitreous ceramic. It is usually pure white because of its high kaolin content and lack of other ingredients like iron that can change the color and properties, sourced from French quarries.

Destination of use:

Vertical indoors/outdoors surfaces, swimming pool, steam rooms shower and all kinds of severe conditions.

Which collection used it?

Plumage and Flora use this clay body in our standard proposal.

PS

Porcelain Stoneware

A high-firing atomised ceramic mix of raw materials. It is particularly suitable to produce glazed porcelain stoneware with similar features as for the clay body used in the tiles industry.

Destination of use:

Vertical indoors/outdoors surfaces, floor, swimming pool, steam rooms, shower and all kinds of severe conditions.

Which collection used it?

Micromosaico used this clay body in our standard proposal.

Clay body | Overview on the clay we use

R

Refractory

A mid fired semi coarsed-grained clay body that has a grey color after firing. It has an elevated amount of grog (crushed refractory rocks) inside the clay, that reduce the thermal expansion coefficient and enable to obtain nice craquelè glaze effect, with depth and vitreous glaze. At the same time the grog added guarantee a high stability during drying and firing process, particularly needed with bigger pieces (i.e. Flora collection).

Destination of use:

Vertical indoors surfaces and shower.

Which collection used it?

Flora used this clay body in our standard proposal.

S

Stoneware

A mid fired fine-grained clay body that has a buff color which affects the color of the glaze. (i.e. For the Flora collection tiles we used this clay for the white satin finish because it obtains a more natural and warm color). It has more mechanical strength than white clay, with less water absorption, it is sourced from local suppliers close to our factory.

Destination of use:

Vertical indoors surfaces and shower.

Which collections used it?

Flora used this clay body in our standard proposal.

T

White clay (earthenware)

A low firing fine-grained clay body that is typically white both in the raw state and after firing. It has a great workability combined with the white color that enabled it to play with colored glazed. This highly porous clay will remain highly absorbent. Locally we have different suppliers of this body clay available. It's been used for centuries in our town, Nove, and it is still used nowadays.

Destination of use:

Vertical indoors surfaces and shower. It's the best choice in terms of quality/cost.

Which collections used it?

Plumage, Petali, Diamantino, Haiku, New Town used this clay body in our standard proposal.

WS

White Stoneware

A mid fired fine-grained clay body that has a white color, it has more mechanical strength than Stoneware with buff color and the same water absorption. Sourced as well from local suppliers.

Destination of use:

Vertical indoors surfaces and shower.

Which collections used it?

Barene used this clay body in our standard proposal.

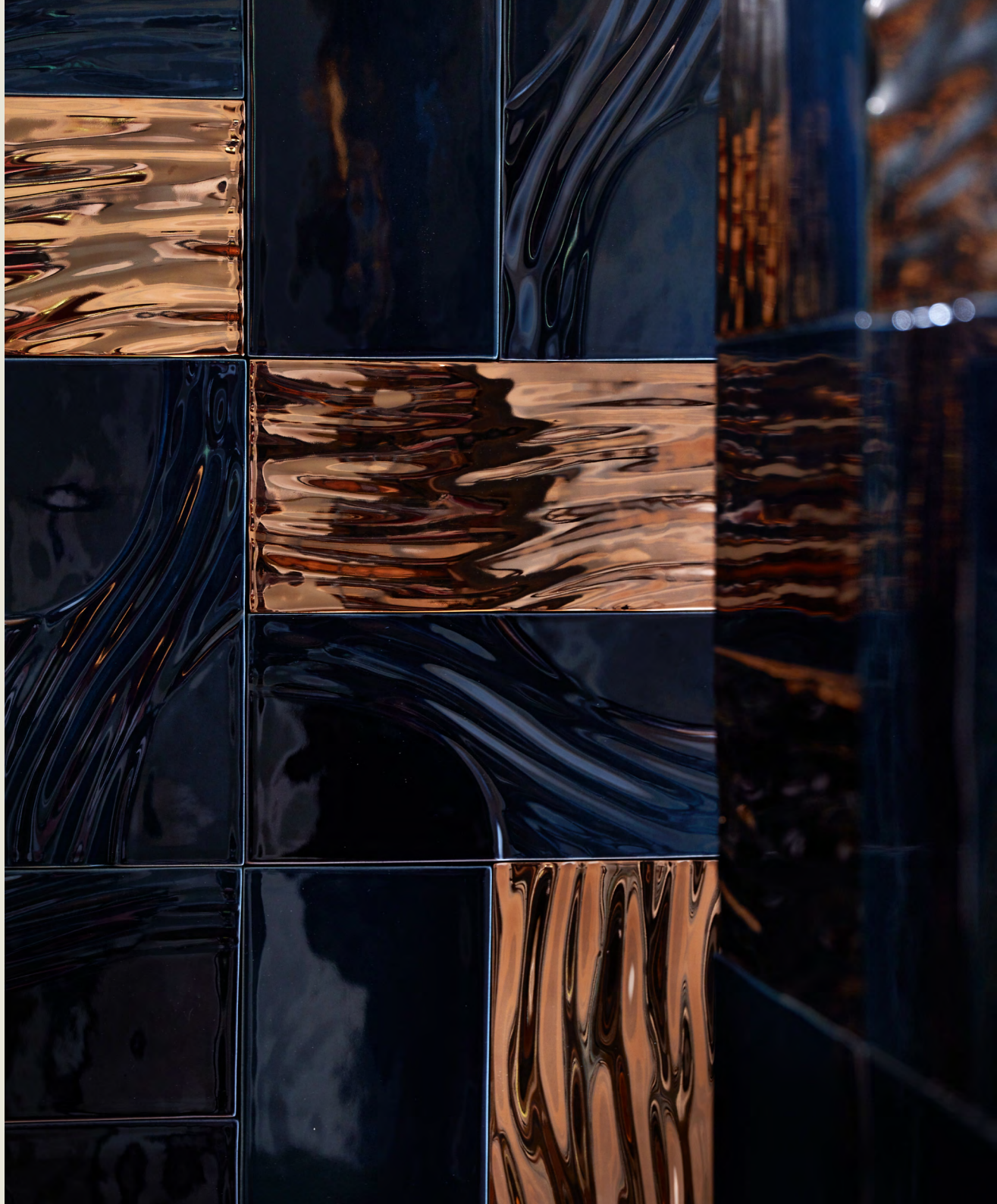
BARENE

Design Zanellato/ Bortotto

Giorgia Zanellato and Daniele Bortotto designed a collection of ceramic surfaces inspired by the Venice lagoon and its peculiar landscape, made of intricate channels, tortuous streams and partially submerged vegetation. Federico Fellini described it as “a strange tapestry [...] an immense, marvellous Persian carpet.” A landscape where the borders between sea and land are ambiguous, because water and strips of land mix and merge continuously into one another: barene is the Italian word to describe those marshlands “that emerge from the lagoon during periods of low tide.” Research into the relationship between place and time has long been a focus of Zanellato and Bortotto. Inspired by Venice and the uniqueness of its landscape, the designers reinterpreted in this collection the repertoire of forms and colours of the barene, using ceramics and precious glazes that recall their translucence and nuances.

Giorgia Zanellato e Daniele Bortotto disegnano una collezione di superfici ceramiche ispirate alla laguna di Venezia e al suo peculiare paesaggio fatto di canali intricati, rivi tortuosi e vegetazione semi-sommersa che Federico Fellini descriveva come “uno strano arazzo [...] un immenso, meraviglioso tappeto persiano”. Un paesaggio dov'è difficile distinguere il confine tra il mare e la terraferma, perché acqua e lembi di terra si mescolano e si confondono continuamente: ai terreni che emergono dalle acque lagunari nei periodi di bassa marea si dà il nome di barene.

Impegnati nella ricerca sulla relazione tra luoghi e tempo, ispirati da Venezia e dall'artigianalità del territorio, i designer di Zanellato/Bortotto reinterpretano in questa collezione il repertorio di forme e colori delle barene, usando ceramiche e smalti preziosi che ne ricordano le trasparenze e le sfumature.





TBA1_S001



TBA2_S001



TBA3_S001



TBA4_S001

BUTTER GLOSS/ SATIN

TBA_S001



TBA1_L001



TBA2_L001



TBA3_L001



TBA4_L001

ANTIQUÉ VENICE GREEN

TBA_L001





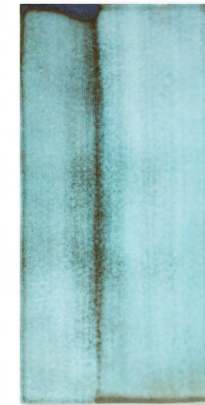
TBA1_M002



TBA2_L001



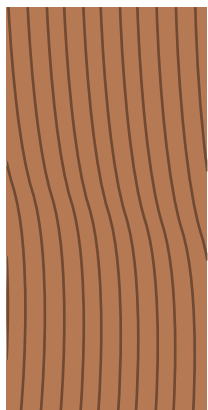
TBA3_L001



TBA4_L001

PLATINUM AND ANTIQUE VENICE GREEN

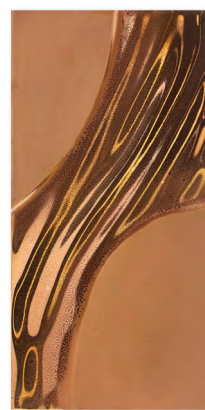
TBA_C004



TBA1_M001



TBA2_M001



TBA3_M001



TBA4_M001

COPPER GLOSS/ SATIN

TBA_M001





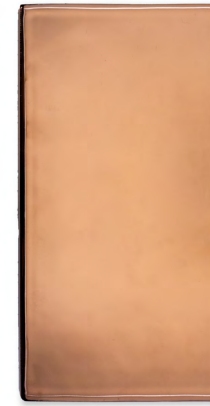
TBA1_M003



TBA2_M003



TBA3_M003



TBA4_M003

COPPER GLOSS

TBA_M003



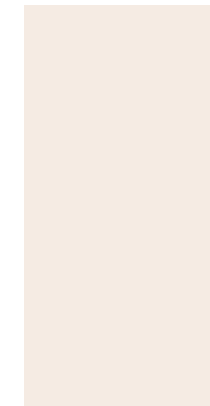
TBA1_M003



TBA2_S002



TBA3_S002



TBA4_S002

COPPER AND CIPRIA GLOSS

TBA_C001

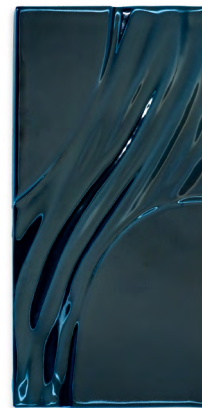




TBA1_M003



TBA2_S003



TBA3_S003



TBA4_S003

COPPER AND NIGHT BLUE GLOSS

TBA_C002



TBA1_M004



TBA2_M004



TBA3_M004



TBA4_M004

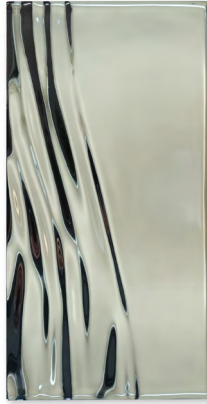
GOLD GLOSS

TBA_M004





TBA_M002



TBA2_M002



TBA3_M002



TBA4_M002

PLATINUM GLOSS

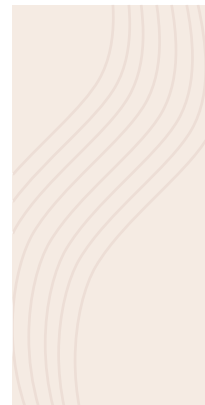
TBA_M002



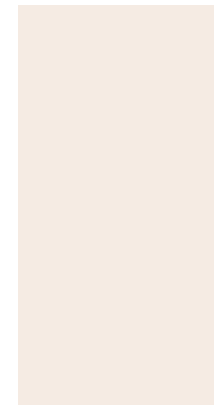
TBA_M002



TBA2_S002



TBA3_S002



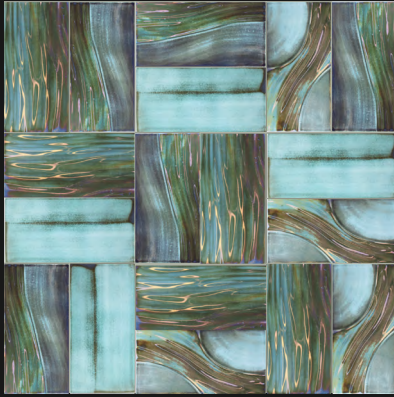
TBA4_S002

PLATINUM AND CIPRIA GLOSS

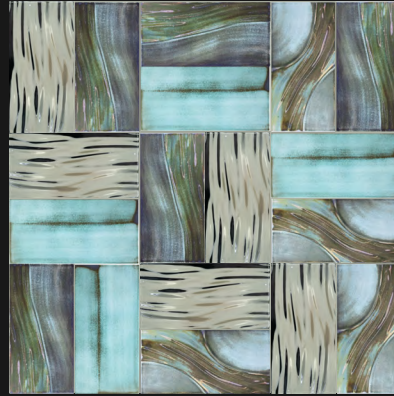
TBA_C003



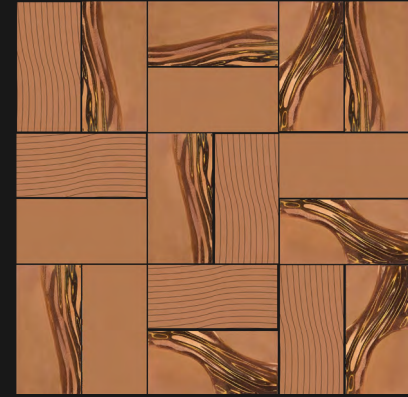
BARENE
STANDARD COLOR COMPOSITION PROPOSED



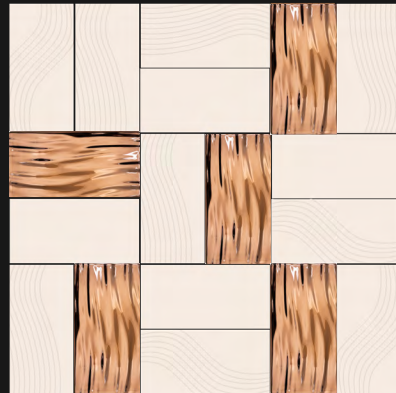
ANTIQUE VENICE GREEN
TBA_L001



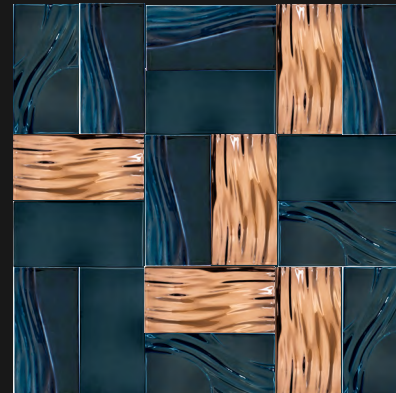
PLATINUM AND ANTIQUE VENICE GREEN
TBA_C004



COPPER GLOSS/ SATIN
TBA_M001

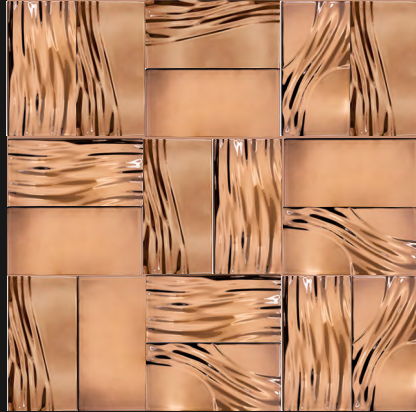


COPPER AND CIPRIA GLOSS
TBA_C001

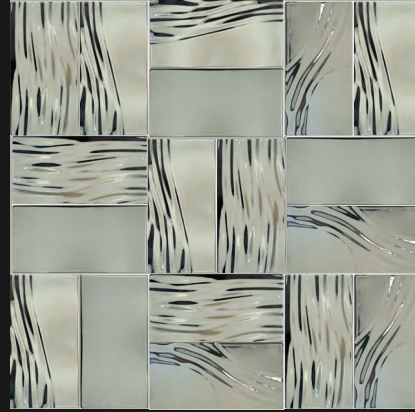


COPPER AND NIGHT BLUE GLOSS
TBA_C002

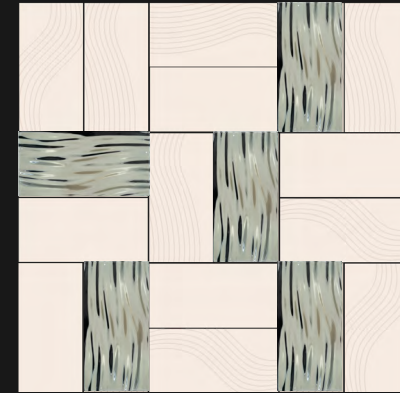
BARENE
STANDARD COLOR COMPOSITION PROPOSED



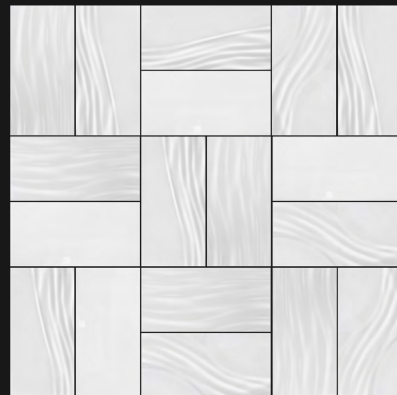
COPPER GLOSS
TBA_M003



PLATINUM GLOSS
TBA_M002



PLATINUM AND CIPRIA GLOSS
TBA_C003



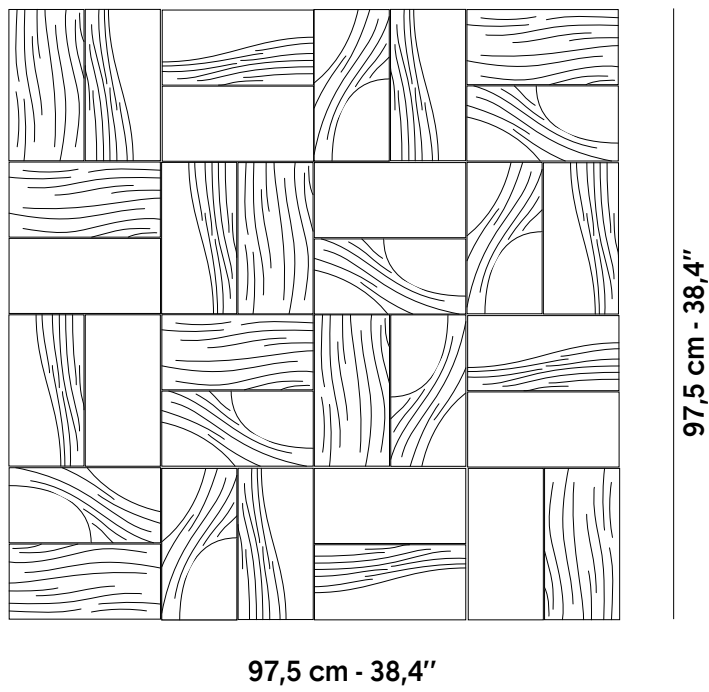
BUTTER GLOSS/ SATIN
TBA_S001



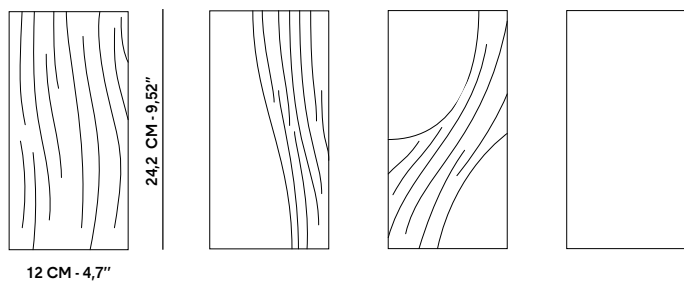
GOLD GLOSS
TBA_M005

TECHNICAL INFORMATION:

* For more details please consult our collection data sheet.



Example of 1 sqm tiles layout pattern with stoneware clay body



Overall dimension with stoneware clay body

STANDARD CLAY BODY AVAILABLE FOR BARENE COLLECTION

WS

White Stoneware > product code TBA_XXX

It is a clay body used as a standard for this collection.

For clay properties refer to table pages 4-5.

When the code begin with a "T" it means that either the pictures on this color chart and prices on the price list refer to a product made using this clay body.

AVAILABLE CLAY BODY ON REQUEST:

P

Porcelain

COLOR VARIATIONS ON DIFFERENT CLAY BODY:

The same color on different clay bodies, could have from slight to substantial different appearance. It could also happen that some colors cannot be obtained on a specific clay body. For more information contact our technical office.

Precious finishing:



it is a finishing where metal or luster salt has been used to obtain a particular effect (mainly metallic or iridescent). Due to the nature of these components a special care may be required during installation and maintainance. For more information contact our technical office.

Hand painted



it is a finishing hand painted with a brush. This could be done either to obtain different color shade within the same piece and create balanced variations on the final composition, or to apply precious finishes where every single stroke must not be wasted.



**DISCOVER THE DESIGNER:
ZANELLATO/BORTOTTO**

In 2013, after graduating from the Università IUAV di Venezia and the ECAL in Lausanne, Giorgia Zanellato and Daniele Bortotto founded the Zanellato/Bortotto studio in Treviso. Their first collection "Acqua Alta", which pays homage to Venice, was presented at the Salone Satellite in Milan. It marks the beginning of their ongoing research into the relationship between place and the passing of time, a connection they analyse through reinterpretation of traditional artisan techniques. The studio's work ranges from product design and limited edition pieces for galleries to art direction for companies and interior design for the private sector.

Giorgia Zanellato e Daniele Bortotto fondano lo studio Zanellato/Bortotto a Treviso nel 2013, dopo gli studi all'Università IUAV di Venezia e all'Ecal di Losanna. Il loro primo progetto, la collezione Acqua Alta presentata al Salone Satellite, è un omaggio alla città di Venezia e segna l'inizio di una lunga e continua ricerca sulla relazione tra i luoghi e lo scorrere del tempo, condotta attraverso l'analisi e la reinterpretazione di tecniche artigianali legate al territorio.

Il lavoro dello studio spazia dal design del prodotto alle edizioni limitate per gallerie, dall'art direction per aziende alla progettazione di interni per privati.





BOTTEGANOVE

Info@botteganove.it • www.botteganove.it • Via molini, 88 36055 nove (vi) italy • T. +39 (0) 424 590 110