

BOTTEGANOVE

PETALI
COLOR CHART



Mosaic | Tile Shade Variation Categories



V0

V0 - Very Uniform Appearance

Pieces of the same shade value are very uniform and smooth in texture, they can be measured for small color differences and are in compliance with color uniformity requirements.



V1

V1 - Uniform Appearance

Differences among pieces from the same production run are minimal.



V2

V2 - Slight Variation

Clearly distinguishable differences in color and/or texture within similar colors.



V3

V3 - Moderate Variation

While the colors and/or texture present on a single piece of tile will be indicative of the colors and/or texture to be expected on the other tiles, the amount of colors and/or texture on each piece may vary significantly. It is recommended that the range be viewed before selection.



V4

V4 - Substantial Variation

Random color and/or texture differ from tile to tile, so that one tile may have totally different colors and/or texture from that on other tiles. Thus, the final installation will be unique. It is recommended that the range be viewed before selection.

DS

Dark Brown Stoneware

A mid fired fine-grained clay body that has a chocolate dark color. Great mechanical strength with little water absorption, sourced from German quarries. It is rich in Manganese oxide that reacts with specific glazes and creates particular effects.

Destination of use:

Vertical indoors surfaces and shower.

Which collection used it?

Clinker, Diamantino, Petali used this clay body our standard proposal.

M

Stoneware "M"

A mid fired fine-grained clay body that has a grey/buff color, it's been formulated specifically for us from a local clay supplier. It matures in a strong, durable and vitreous ceramic in a mid fired range, enabling to save energetic cost. It doesn't have a great workability so not all shapes can be made with this body clay and not all the glazes can be used, but still represent a great less expensive option to the classic porcelain or stoneware porcelain body clay.

Destination of use:

Vertical indoors/outdoors surfaces, swimming pool, steam rooms shower and all kinds of severe conditions.

Which collection used it?

Plumage, Petali, Clinker, Diamantino, could use this clay body for specific destination of use like outdoor installation or other severe conditions of use.

P

Porcelain

A high-firing fine-grained white clay body that matures to a durable, strong, vitreous ceramic. It is usually pure white because of its high kaolin content and lack of other ingredients like iron that can change the color and properties, sourced from French quarries.

Destination of use:

Vertical indoors/outdoors surfaces, swimming pool, steam rooms shower and all kinds of severe conditions.

Which collection used it?

Plumage and Flora use this clay body in our standard proposal.

PS

Porcelain Stoneware

A high-firing atomised ceramic mix of raw materials. It is particularly suitable to produce glazed porcelain stoneware with similar features as for the clay body used in the tiles industry.

Destination of use:

Vertical indoors/outdoors surfaces, floor, swimming pool, steam rooms, shower and all kinds of severe conditions.

Which collection used it?

Micromosaico used this clay body in our standard proposal.

Clay body | Overview on the clay we use

R

Refractory

A mid fired semi coarsed-grained clay body that has a grey color after firing. It has an elevated amount of grog (crushed refractory rocks) inside the clay, that reduce the thermal expansion coefficient and enable to obtain nice craquelè glaze effect, with depth and vitreous glaze. At the same time the grog added guarantee a high stability during drying and firing process, particularly needed with bigger pieces (i.e. Flora collection).

Destination of use:

Vertical indoors surfaces and shower.

Which collection used it?

Flora used this clay body in our standard proposal.

S

Stoneware

A mid fired fine-grained clay body that has a buff color which affects the color of the glaze. (i.e. For the Flora collection tiles we used this clay for the white satin finish because it obtains a more natural and warm color). It has more mechanical strength than white clay, with less water absorption, it is sourced from local suppliers close to our factory.

Destination of use:

Vertical indoors surfaces and shower.

Which collections used it?

Flora used this clay body in our standard proposal.

T

White clay (earthenware)

A low firing fine-grained clay body that is typically white both in the raw state and after firing. It has a great workability combined with the white color that enabled it to play with colored glazed. This highly porous clay will remain highly absorbent. Locally we have different suppliers of this body clay available. It's been used for centuries in our town, Nove, and it is still used nowadays.

Destination of use:

Vertical indoors surfaces and shower. It's the best choice in terms of quality/cost.

Which collections used it?

Plumage, Petali, Diamantino, Haiku, New Town used this clay body in our standard proposal.

WS

White Stoneware

A mid fired fine-grained clay body that has a white color, it has more mechanical strength than Stoneware with buff color and the same water absorption. Sourced as well from local suppliers.

Destination of use:

Vertical indoors surfaces and shower.

Which collections used it?

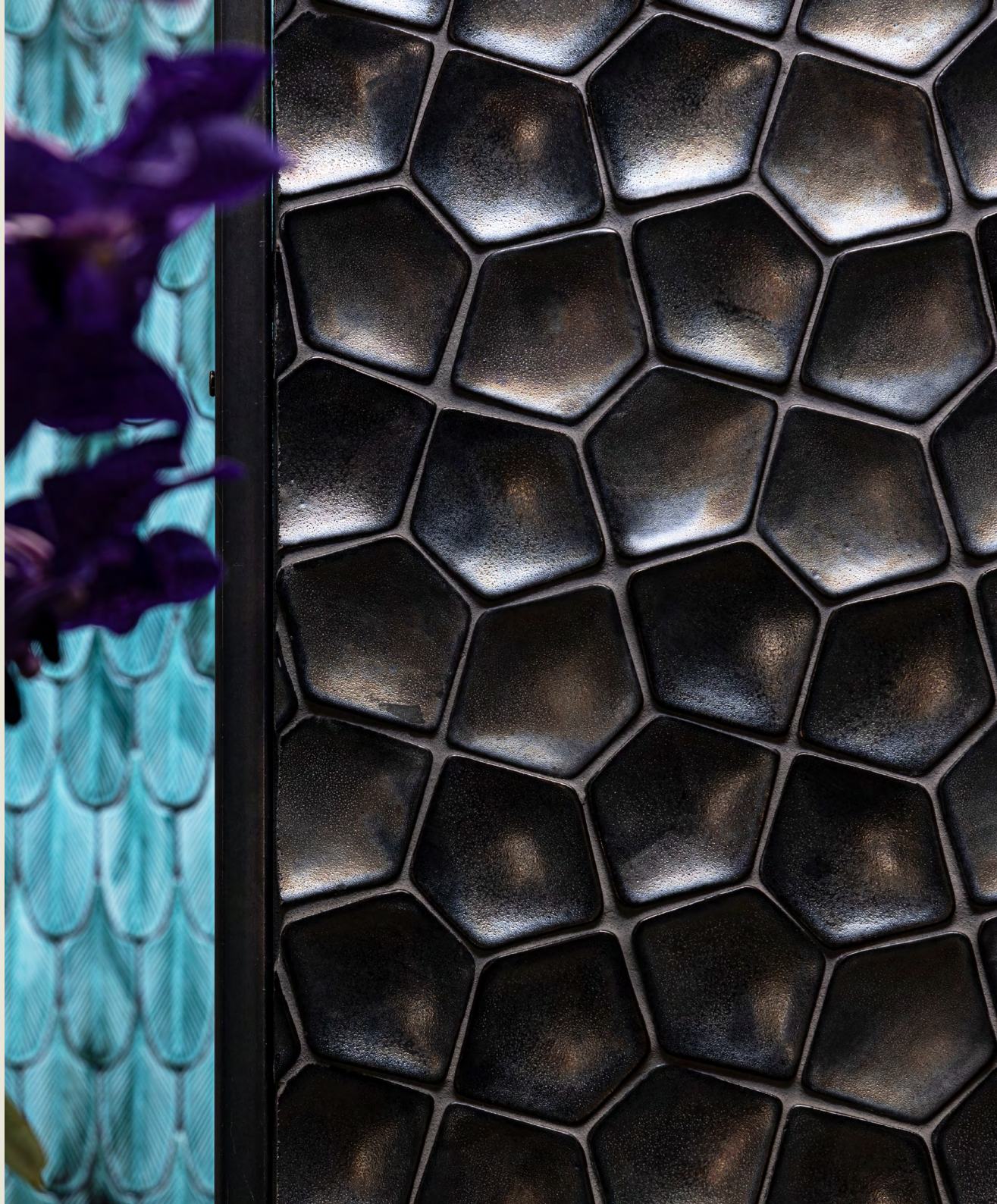
Barene used this clay body in our standard proposal.

PETALI

Design Angelo Spagnolo

The tiles of the Petali Collection reprise the geometric hexagon, rendered delicate by smooth angles and curved surfaces that thanks to wet moulding create three-dimensional effects. Easily combined, available in small or large format, these tiles can give rise to a decorative surface full of reflections.

Le tessere di Petali riprendono l'esagono geometrico, reso delicato da angoli morbidi e dalla curvatura della superficie che, stampata a umido, crea un effetto tridimensionale. Liberamente combinabili tra loro, disponibili in piccolo o grande formato, le tessere danno vita a una superficie decorativa ricca di riflessi.





TERRACOTTA SATIN LIGHT

TPE_S008



TERRACOTTA GLOSS

TPE_S009



BRONZE GLOSS

CPE_M004



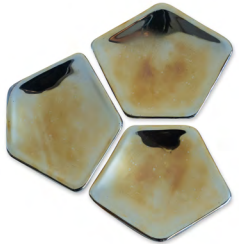
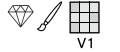
ORO SATIN

TPE_M002



ORO GLOSS

TPE_M001



PETROLEUM

TPE_L003



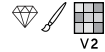
PLATINO GLOSS

TPE_M003



MOTHER OF PEARL

TPE_L002



WHITE SATIN

TPE_S011



WHITE GLOSS

TPE_S010



WARM WHITE GLOSS

CPE_S011A



CADET SATIN

TPE_S004



CADET GLOSS

TPE_S003



FRESH MEANT

TPE_S012



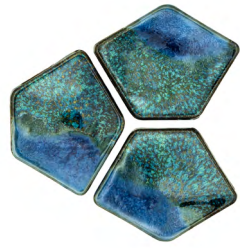
GREEN MALACHITE GLOSS

CPE_S005

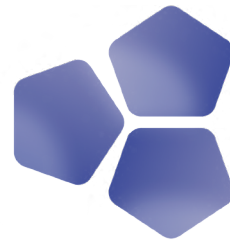




TURQUOISE GLOSS
CPE_S005A



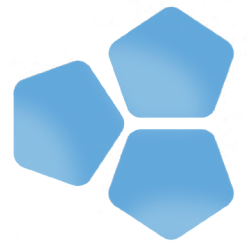
OCEAN 2
CPE_S020



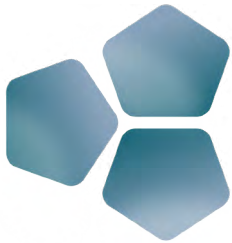
OCEAN
CPE_S018



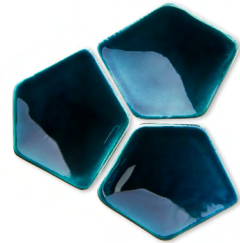
OCEAN 1
CPE_S019



LIGHT BLUE AVIO
CPE_S017



GREEN BLUE SHADED
MPE_S014



INDIGO/VERDE
TPE_S006



**GREEN MALACHITE +
BLACK SPOT**
CPE_S021



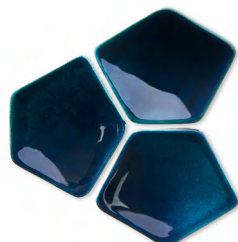
LIGHT BLUE SHADED
MPE_S013



BLUE AVIO
CPE_S016



VIVID BLUE
TPE_S007A



NIGHT BLUE GLOSS
TPE_S007



DARK BLUE SHADED
MPE_S015



BLACK GLOSS
TPE_S001



BLACK SATIN
TPE_S002

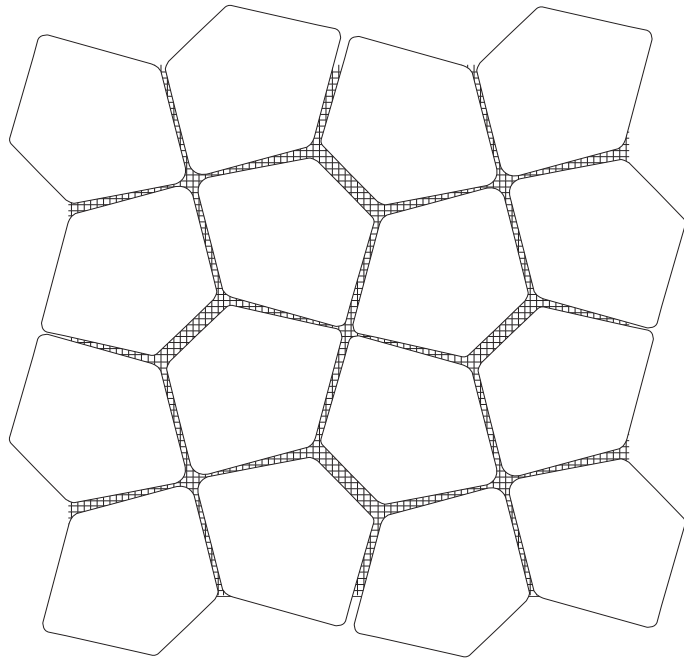


**METAL WITH
GOLDEN SHADE**
CPE_L001



TECHNICAL INFORMATION:

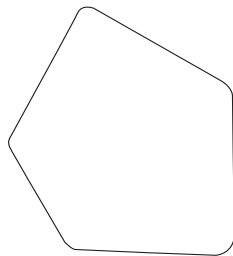
* For more details please consult our collection data sheet.



white clay ~ 28,8 cm - ~ 11,3"
dark brown stoneware ~ 27,3 cm | ~10,74"

white clay ~ 28,8 cm - ~ 11,3"
dark brown stoneware ~ 27,3 cm | ~10,74"

Petali collection is supplied back mesh mounted



white clay 8,5 cm | 3,34"
dark brown stoneware 7,9 cm | 3,11"

white clay 7,7 cm | 3"
dark brown stoneware 7,2 cm | 2,83"

STANDARD CLAY BODY AVAILABLE FOR PETALI COLLECTION**T****White Clay (earthenware) > product code TPE_XXX**

It is the main clay body used as a standard for this collection. For clay properties refer to table pages 4-5.

When the code begin with a "T" it means that either the pictures on this color chart and prices on the price list refer to a product made using this clay body.

M**Stoneware "M" > product code MPE_XXX**

It is a clay body used on request for specific project, (i.e. for outdoor), for clay properties refer to table pages 4-5.

When the code begin with an "M" it means that either the pictures on this color chart and prices refer to a product made using this clay body.

DS**Dark Brown Stoneware > product code CPE_XXX**

It is a clay body used as a standard for this collection.

For clay properties refer to table page xxxx

When the code begin with a "C" it means that either the pictures on this color chart and prices on the price list refer to a product made using this clay body.

AVAILABLE CLAY BODY ON REQUEST:**P****Porcelain****COLOR VARIATIONS ON DIFFERENT CLAY BODY:**

The same color on different clay bodies, could have from slight to substantial different appearance. It could also happen that some colors cannot be obtained on a specific clay body. For more information contact our technical office.

**Precious finishing:**

it is a finishing where metal or luster salt has been used to obtain a particular effect. Due to the nature of these components a special care may be required during installation and maintainance. For more information contact our technical office.

**Hand painted**

it is a finishing hand painted with a brush.

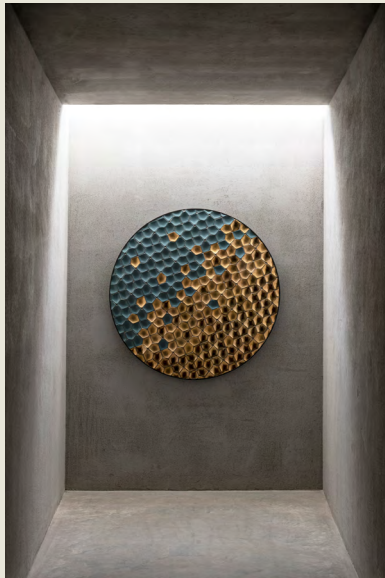
This could be done either to obtain different color shade within the same piece and create balanced variations, or to apply precious finishes where every single stroke must not be wasted.

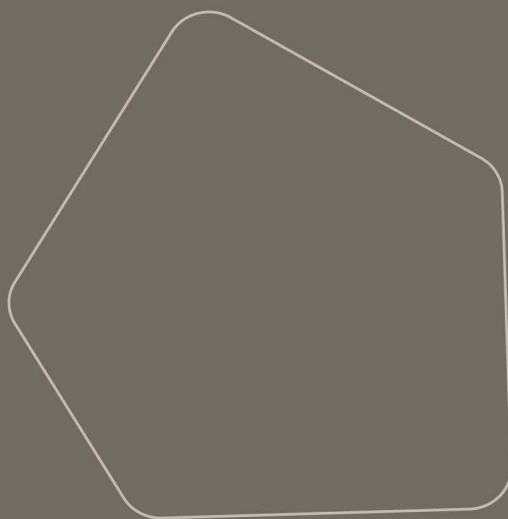


**DISCOVER THE DESIGNER:
ANGELO SPAGNOLO**

The artist and designer Angelo Spagnolo, from Marostica, is an important name in the world of ceramics. He has taught at the Istituto Statale d'Arte in Nove and collaborated with several of the most innovative firms in the Vicenza area. Nature and geometry are ever at the heart of his research, inspired by natural clays and the colours of the earth. To his talent as an artist, Spagnolo adds the technical skills that enable him to experiment with materials and come up with innovative solutions.

Artista e designer originario di Marostica, Angelo Spagnolo è un nome importante nel mondo della ceramica. È stato insegnante di discipline plastiche all'Istituto Statale d'Arte di Nove e collaboratore di alcune delle aziende più innovative del vicentino. Natura e geometria sono da sempre i cardini della sua ricerca, ispirata dalle argille naturali e dai colori della terra. Al talento di artista, Spagnolo unisce l'abilità di un tecnico capace di sperimentare sulla materia e di trovare soluzioni innovative.





BOTTEGANOVE

Info@botteganove.it • www.botteganove.it • Via molini, 88 36055 nove (vi) italy • T. +39 (0) 424 590 110