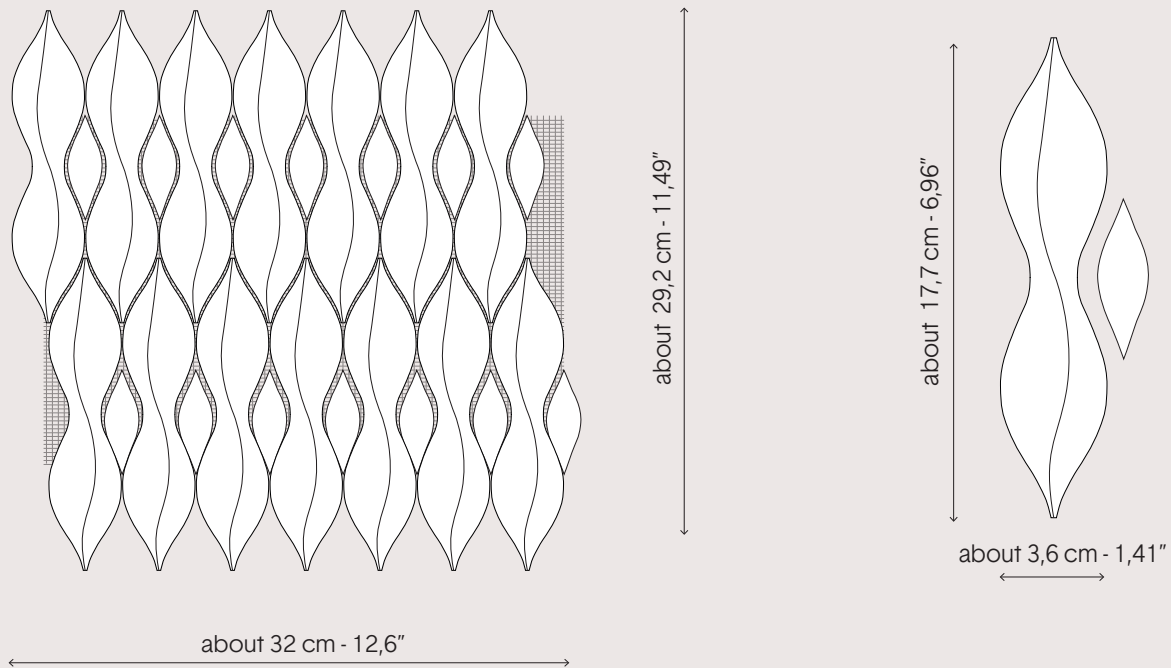


**1/2**

PRODUCT CODE:	TSA_ / CSA_
BODY CLAY AVAILABLE:	DARK BROWN STONEWARE (CSA_) <b>DS</b> WHITE CLAY (TSA_) <b>E</b>
SIZES:	3,6 X 17,6 CM — 1,41" X 6,92"
THICKNESS (MAX):	1,8 CM - 0,70"
GLAZE:	GLOSS/SATIN/IRIDESCENT/METALLIC
USE:	TSA_   CSA_ INDOOR OUTDOOR ON REQUEST

SUPPLY	TILES ARE FIXED ON A MESH BACKING READY FOR THE INSTALLER TO USE
MESH SIZE:	32 X H 29,2 CM — 12,6" X H 11,49"
# OF PCS/SHEET	14 PCS
HALF TILES	AVAILAIBLE ON REQUEST
PLAIN TILES	AVAILAIBLE ON REQUEST
1 SQM	EQUAL TO 10,9 SHEET
1 SQFT	EQUAL TO 1,013 SHEET
SURPLUS	10% RECCOMENDED
NET WEIGHT	16 KG/SQM



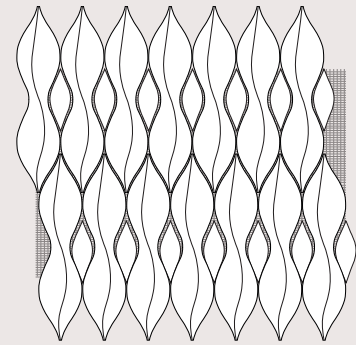
**NOTES:**

**SALOME' COLLECTION** is handcrafted made from natural raw materials wet pressed. It may therefore present differences in sizing, flatness, surface irregularities and variations in shades that should be considered as features of the material, and cannot considered defects. During installation, those features should be use to enhance the aesthetic effects. Botteganove srl reserves the right to change this data sheet without notice.

## STANDARD PACKING | WHITE CLAY

---

SHEETS/BOX	7
SQM/BOX	0,64
SQFT/BOX	7
KG/BOX	10,5 KG
BOX/PAL (MAX)	42
SQM/PAL (MAX)	27
SQFT/PAL (MAX)	290,6
KG/PAL (MAX)	560 KG
PAL OVERALL DIMENSIONS (MAX)	82 x 122 x h 135 cm



## SHIPPING

---

For large, medium and small shipments we use wooden crates, in order to offer extra protection from vibration, shock, and shifting during transport.

For large and medium shipment we provide stackable crates for optimized shipping and storage space in order to save transportation cost.

Wooden crate also ensure an extra level of security, because they're usually harder to open than palletized loads.

## INSTALLATION AND MAINTENANCE

---

Installation and maintenance guide is always provided. It works as a general precautions and tips on how to install and care for our tiles and mosaics. Contact our tech dep for more info.